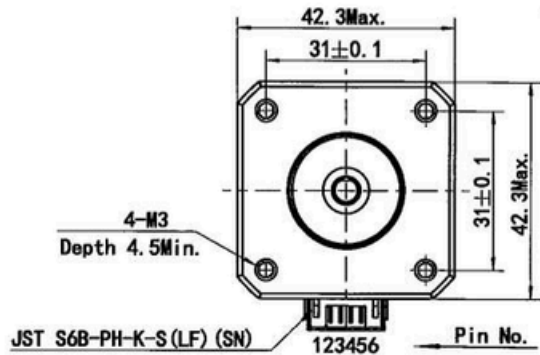
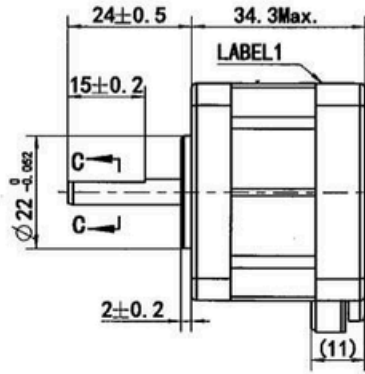
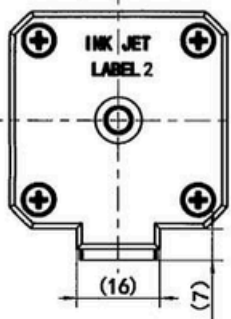
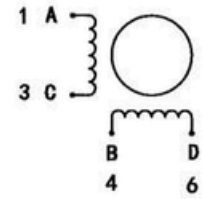


MS17HD4P4150



Wiring Diagram

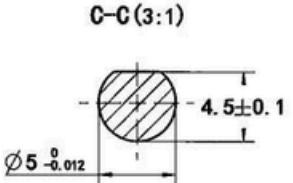


Exciting Sequence vs. Direction of Rotation

STEP	A	B	C	D	CCW
1	+	+	-	-	↑
2	-	+	+	-	
3	-	-	+	+	
4	+	-	-	+	

Clockwise view from mounting side

1. Number of Phase	2
2. Step Angle	1.8°
3. Rated Voltage	2.55 V DC
4. Rated Current	1.5 Amp
5. Holding Torque	0.32 Nm Typ. (Two phase on/rated current)
6. Phase Resistance	1.7 ohm±10% (20°C)
7. Phase Inductance	2.9 mH±20% (1kHz 1V <sub>rms</sub> )
8. Rotor Inertia	38 gcm <sup>2</sup>
9. Motor Weight	0.21 kg
10. Insulation Class	B (130°C)



Label1 Detail

STEPPING MOTOR  
 Insulation: Class B, 60VDC Max.  
 1.5Amps Holding; 0.32Nm  
 3000RPM Max. **PIVEXIN** US  
 UL FILE No. E465363 XXX

Factory ID

Label2 Detail

TYPE MS17HD4P4150  
 XXXXXXXX YY/MM/DD

Work Order Date Format

E1	EGR:23-317	2023.03.27	Unit:mm	Approve			
E0	Update nameplate	2017.04.24	First angle method	Standardize			
D0	306mNm Min, change the nameplate	2013.01.24	Tolerances for linear and angular dimensions without individual tolerance indications GB/T 1804-m eqv ISO 2768-1:m	Process Review			
C0	mNm Min.	2012.11.07	Geometrical tolerance for features without individual tolerance indications GB/T 1184-K eqv ISO 2768-2:K	Check			
B0	1.7 ohm, 2.9mH, 2.55V, 310mNm	2012.03.12		Design			
A0	Original revision	2011.07.18		NAMES	SIGNATURE	DATE	
REV.	REVISION RECORD	DATE	UNLESS OTHERWISE SPECIFIED				

Drawing No: 4611110008897 Rev. E1 SCALE: 1:1 Sheet 1 of 1